



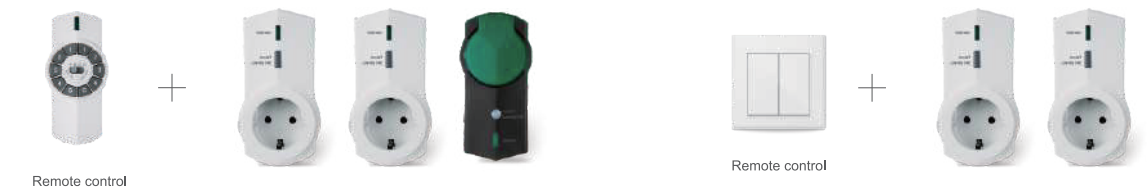
### PA-GE9A-01SRF2

RF receiver  
250V~, 50Hz  
Max. 2300W 10A  
-Frequency 433.92MHz  
-Without push-button, Self-learning mode



### PA-GE1-01SRF

RF receiver  
250V~, 50Hz;  
Max. 3680W 16A  
-Frequency 433.92MHz



### PA-GE9A-01SRO

RF receiver  
250V~, 50Hz;  
With Dimmer 40-300W  
-Frequency 433.92MHz



### PA-GE1-01SRO

RF receiver  
250V~, 50Hz;  
With Dimmer 40-300W~  
-Frequency 433.92MHz

